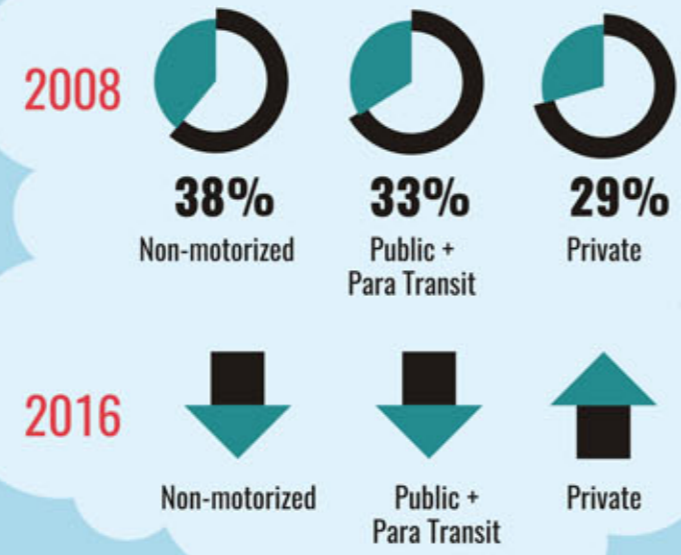


# MOBILITY IN URBAN INDIA

Urban population relies on a variety of transport modes

## Model Share of Transport



**Non-motorized**

walking and cycling

**Public**

bus, train, tram, ferry

**Private**

4 & 2 wheeler

**Para-transit**

taxi, autoriksha

FOR REVIEW

## Urban Mobility should Leverage

Land use policies

Development policies

Environmental Policies

To Deliver



Accessible



Affordable



Efficient



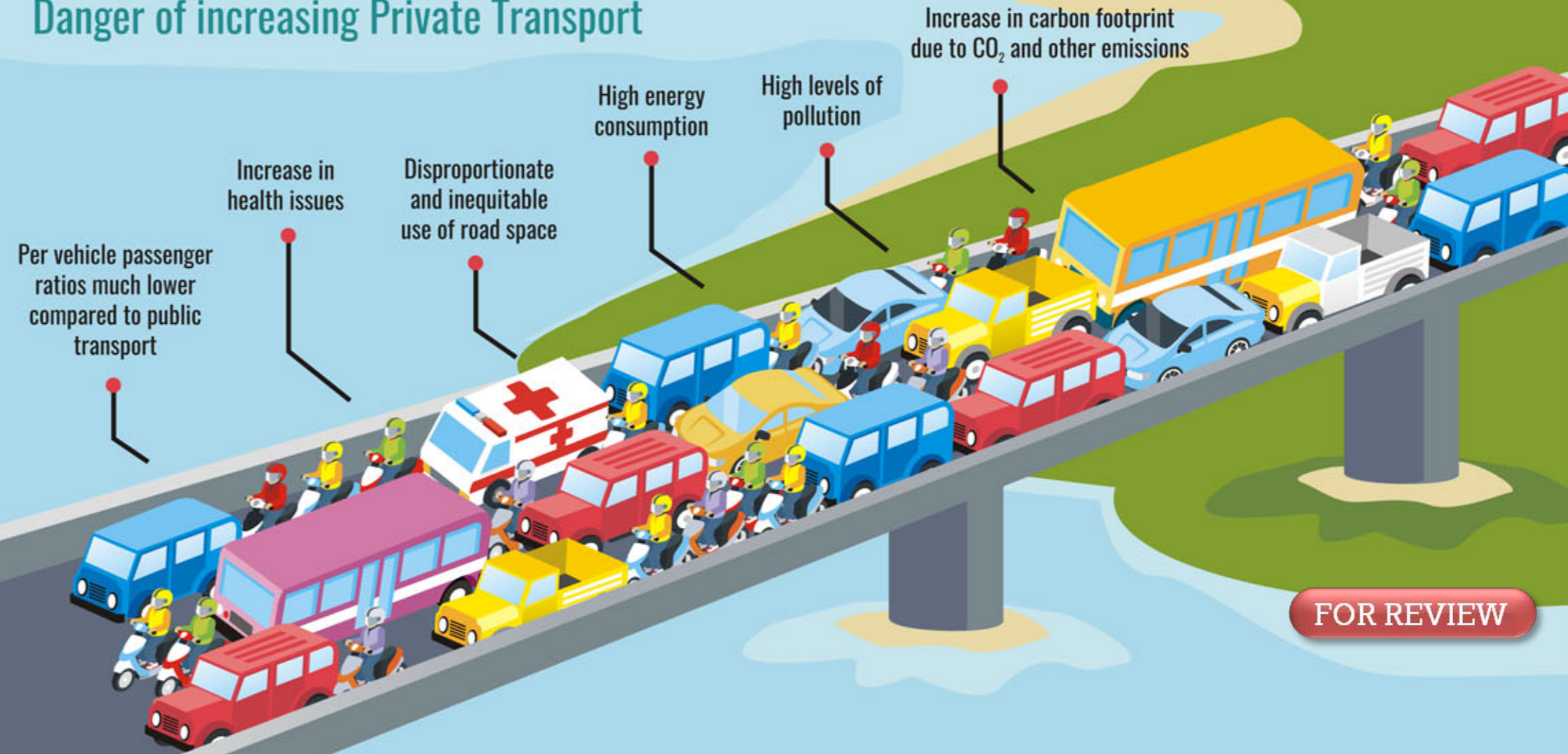
Reliable

Mobility solutions

## Why is public transport failing?

- Last-mile connectivity
- Unpredictable service
- Lack of a multi-modal system
- Poor routing
- Uncomfortable travel experience

## Danger of increasing Private Transport



FOR REVIEW

## Assessment of immediate concerns

Urban India is transitioning its cities to metropolis'

- Requires an effective urban mobility strategy that
  - Moves people, goods and services and keeping pace with changing social dynamics
  - Is reliable, efficient, environmentally sound and inclusive
- Needs to efficiently cater to
  - Large migrant population
  - Industrial interests
  - Commercial aspirations



Wipro  
earthian  
2016

College  
Program

